



Join us in Tralee in 2010. We assure you a memorable stay. **Beidh fíor fáilte romhat.**

Tralee is your ideal base whether you are a planning a weekend away, family holiday, a break with friends or work colleagues. There are Special Offer accommodation packages to suit all tastes and price ranges in our hotels, guesthouses, hostels, self-catering and caravan and camping facilities. Log on to www.holidaytralee.com or contact individual accommodation providers.



Getting to Tralee has never been easier. With the opening of the M7 and M8 motorways Tralee is less than a 4 hour drive from Dublin. Irish Rail offers InterCity rail services to and from Tralee seven times daily and Ryanair operates daily jet flights to Kerry Airport from Dublin, London Stansted and Frankfurt Hahn. Tralee is the regional hub for Bus Éireann's expressway bus services.



FESTIVALS 2010



- 22 -24 January: Shindig Traditional Music and Set Dance Festival**
Venue: Ballygarry House Hotel.
- 16-17 March: St. Patrick's Festival**
- 2-5 April: Samhlaíocht Easter Arts Festival**
Samhlaíocht is a celebration of all things artistic: music, tradition, craft, culture, food, film and literature for people of all ages.
- 2- 11 April: Tír na nÓg Family Festival (New for 2010)**
Ireland's first dedicated family festival coincides with the Samhlaíocht Easter Arts Festival. This year's inaugural festival includes Children's Funfair, National Stage School Championships, International Youth Rugby Cup, Panto Horse Races, Treasure Hunts, Live Street Entertainment, Children's Workshops and much much more..... details to be announced in February.
- 9 May: Kingdom County Fair, Ballybeggan Racecourse.**
- 22 - 24 April: IMRO Christie Hennessy Awards & Music Festival**
Siamsa Tire Theatre. Details to be confirmed in February.
- 2-6 June: Listowel Writers' Week**
- 18-20 June: Tralee Garden Festival / Féile na mBláth**
Tralee Town Park is the venue for this 3-day mid-summer festival with free activities and events for all ages: gardening demonstrations, music recitals, garden tours, exhibitions, flower show, dog show and South of Ireland Pipe Band competition on Sunday afternoon.
- 10-12 August: Puck Fair, Killorglin.**
- 20-24 August: Rose of Tralee International Festival**
Now in its 51st year and still Ireland's largest international festival. Why watch it on TV when you can see it live in Tralee! For five days Tralee takes on a truly international flavour with visitors and entertainers from all over the world. Enjoy free street entertainment, funfair, circus, open markets, fashion and music shows in the Festival Dome and some of the most beautiful girls from Ireland and abroad seeking the coveted title of the Rose of Tralee.
- 3 October: Annual Steam Threshing Festival, Blennerville Windmill**
- 30 October - 6 November: Kerry Film Festival**
- 12-14 November: Tralee Circus Festival**



In 2010 Tralee hosts no fewer than 10 festivals from January to December including two new festivals: 10 day Tír na nÓg Family Festival at Easter and Christie Hennessy Music Festival at the end of April. Tralee Town Park is the venue for the mid Summer garden festival Féile na mBláth (June 18-20) and in mid August the town hosts the 51st International Rose of Tralee Festival.

Tralee's location at the heart of Kerry makes it the ideal location for exploring the Kingdom County: the sandy beaches and culture of North Kerry, the Dingle Peninsula, Lakes of Killarney and Ring of Kerry. It is home to the Aqua Dome Waterworld, Siamsa Tire - Ireland's National Folk Theatre, Kerry County Museum - the 2009 Irish Museum of the Year, and the Kingdom Greyhound Racing Stadium.

lies on the south west coast of Ireland, nestled in a valley between the Slieve Mish and Stacks Mountains. It is the capital town of County Kerry, Ireland's premier tourist destination. It has all the facilities of a county capital: superb accommodation at affordable prices, excellent shopping, historic buildings, outdoor pursuits, public parks, a vibrant nightlife, quality pubs and restaurants, and a range of all-weather attractions unmatched anywhere outside of Dublin.

TRALEE



GETTING TO TRALEE



Getting to Tralee has never been easier. With the opening of the M7 and M8 motorways and improved national road network Tralee is easily accessible by car from other major Irish towns and cities, international airports and ferry ports. The Irish Rail InterCity rail service operates to and from Tralee seven times daily and Ryanair operates daily jet flights to Kerry Airport (16km from Tralee) from Dublin, London Stansted and Frankfurt Hahn. Tralee is also the regional hub for Bus Éireann's expressway bus services. In Tralee there is an ample supply of taxis and self-drive cars available. Within the town there is a commuter bus service - Tralee Peoples Bus - which operates between 8.00 hrs and 18.00, Monday-Saturday.

Further Information:
Irish Rail: Casement Station, Tralee. (066) 7123522. www.irishrail.ie
Kerry Airport (066) 9764644 www.kerryairport.com; www.ryanair.com
Bus Éireann: (066) 7123566 www.buseireann.ie
Tralee Peoples Bus Timetable: www.ttca.ie/bus-timetable.pdf

Car Hire Companies
Enterprise Car Hire, John Joe Sheehy Rd, Tralee(066) 7119304
Duggan's Garage, Ashe St, Tralee (066) 7121124 (2 days min. hire period)
Joe O'Connor, Clash Cross, Tralee (066) 7124782 (3 days min. hire period)
Kerry Airport - Avis, Budget, Hertz (066) 9764644

Coach Hire
Jackie Power Tours, Rock Street, Tralee. (066) 7129444
O'Sheas of Kerry, Oakpark Drive, Tralee. (066) 7180123

Tralee Tourist Information Office (Open all year)
Ashe Memorial Hall, Denny Street, Tralee. Tel: (066) 7121288



TRALEE

COUNTY KERRY

2010



SUPPORTED BY TRALEE TOWN COUNCIL

HOTELS

Ballygarry House Hotel and Spa ****
Killarney Road, Tralee
T. (066) 7123322. www.ballygarryhouse.com

Carlton Hotel (formerly Fels Point Hotel) ****
Dan Spring Road, Tralee
T. (066) 7199100. www.carltonhoteltralee.com

Manor West Hotel, Spa & Leisure Club ****
Killarney Road, Tralee
T. (066) 719 4500. www.manorwesthotel.ie

Meadowlands Hotel ****
Oakpark, Tralee.
T. (066) 718 0444. www.meadowlandshotel.com

Abbeygate Hotel***
Maine Street, Tralee.
T. (066) 7129888. www.abbeygate-hotel.com

Ballyroe Heights Hotel ***
Ballyroe, Tralee.
T. (066) 7126796. www.ballyroe.com

Brandon Hotel, Conference & Leisure Centre ***
Princes Street, Tralee.
T. (066) 7123333. www.brandonhotel.ie

Grand Hotel***
Denny Street, Tralee.
T. (066) 712 1499 www.grandhoteltralee.com

Imperial Hotel**
Denny Street, Tralee
T. (066) 7127755.

Tralee Townhouse ***
High Street, Tralee
T. (066) 718 1111 www.traleetownhouse.com



SELF-CATERING

Tralee Marina Apartments ****
Basin Road, Tralee.
T. (066) 718 1222 www.traleemarina.com

Coiscéim Village ****
Dromtacker, Tralee.
T. (087) 6865551 www.coisceimvillage.com

Courtyard Irish Holiday Cottages ****
Blennerville, Tralee
T. (066) 7124494 www.countykerryholidays.com

Kerry Lee Holiday Village ***
Upper Oakpark Road, Tralee
T. (066) 7126121 www.kerry-lee.com

Tralee Town Centre Apartments ***
Main Street, Tralee.
T. (066) 7123456 www.ttca.ie

Hostels

Castle Hostel, Lr. Castle Street, Tralee.
066 712 5167. www.castlehostel.ie

Finnegan's Hostel, Denny Street, Tralee.
(066)7127610 www.finneganshostel.com



Caravan & Camping

Woodlands Park ****
Dan Spring Road, Tralee.
T. (066) 7121235 www.kingdomcamping.com



Map courtesy of Fáilte Ireland, OSI Ireland and Tralee Town Council

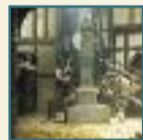
TRALEE VISITOR ATTRACTIONS

Aqua Dome Waterworld



Featuring slides, waves, rivers and rapids it is a great place for all the family to enjoy a splashing good time underneath the huge dome. There's an adults-only health suite with two large saunas, a steam room and cool pool and outside an 18 hole miniature crazy golf course (putters and balls are included in the price) and remote control trucks and boats offering more fun for all ages.
T. (066) 7128899. Website: www.aquadome.ie

Kerry County Museum, Ashe Memorial Hall.



The Museum of the Year 2009 explores the history and archaeology of Kerry and Ireland over 7000 years. You can travel back in time to the Medieval Ages and stroll through the recreated streets and houses of Tralee in 1450. The museum gallery contains priceless artifacts and exhibits from the first settlers to Tom Crean the great Antarctic explorer. The museum also hosts major international exhibitions. A family exploration trail and activity booklets for children are available.
T. (066) 7127777. Website: www.kerrymuseum.ie

Blennerville Windmill & Visitor Centre.



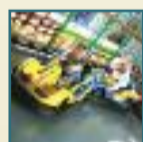
Blennerville Village is home to Ireland's largest working windmill. The restored windmill is the centrepiece of a visitor complex comprising an exhibition centre, small craft centre and craftshop. A Vintage Railway, part of the famous Tralee & Dingle Line, links Tralee with Blennerville during the months of June, July and August.
T. (066) 7121064. www.blennervillewindmill.com

Siamsa Tire- National Folk Theatre of Ireland, Tralee Town Park



Performing a choice of four superb shows six nights a week during peak summer months. The theatre also hosts concerts, opera, and other theatrical events and international exhibition in the Round Gallery. Advance booking is recommended. T. (066) 7123055. Website and Online Booking at www.siamsatire.com

Toby World for Children.



Mileheight Retail Park (behind Soundstore)
Toby World is one of Ireland largest children's indoor entertainment centres. The Play Centre includes 3 play-frames, a four-lane astra slide, spiral slides and indoor sports court. The baby and toddler area for under 4's has its own spiral slide, ball-pond and pedal cars. Quazar (Lazer-Tag) Zone and Café facilities. T. (066) 7192469
Website: www.tobyworld.ie

Ardferth Cathedral - National Monument



Ardferth Cathedral, 8km from Tralee on the R551, is built on the site of a monastery founded in the 6th century by St. Brendan the Navigator (484-577AD). The cathedral site contains the remains of three medieval churches. The South Transept now restored houses an exhibition of the history of the site. Guided tours are provided Open Easter Holidays and May-September. T. (066) 7134711

Tralee Town Park

A green oasis in the centre of Tralee with new Children's Playground, Garden of the Senses, Rose Garden, Rose of Tralee Memorial and 3km of open parkland and landscaped walkways.

Tralee Golf Club, Barrow West, Ardferth.

On a spectacular headland overlooking the Atlantic Ocean sits the magnificent Arnold Palmer designed 18 hole Tralee Golf Club. Ranked amongst the best golf courses in the world and the scenery is truly spectacular. Advance booking recommended.
T. (066) 713 6379 www.traleegolfclub.com

Tralee Regional Sports and Leisure Centre

Clounalour, Oakpark, Tralee. T. (066) 712 6442

Tralee Pitch & Putt Club,

Killeen. Oakpark, Tralee. 18 hole course. T. (066) 712 5450

Tennis

Carlton Hotel, Dan Spring Road.
3 floodlit courts. Visitors welcome. Open daily. (066) 719 9111

Indoor Bowling & American Pool

Bowling Buddies, Manor East, Tralee.
(066) 7197007

Predator Paint Ball Games

Alderwood Road, Tralee [Over 16s only] (066) 7128401

Horse Riding

Tralee Equestrian Centre, Tonevane, Tralee. T. (066) 7117800

Sailing, Kayaking, Canoeing, Surfing, Watersports

Tralee Bay Sailing School, Fenit Marina, Tralee. (087) 7606795
Jamie Knox Watersports, The Maharees, Castlegregory (066) 7139411
Ryan Coote, Banna Strand, Ardferth. (087) 2229542.
Kingdom Waves Surf School, Derryquay, Tralee (087) 7447958



Walking Trails (Details from Tralee Tourist Office)

River Lee Nature Way, Lee Valley Loop, Blennerville/Tonevane Nature Trail, Ballyseedy Wood, Scotia's Glen. The Dingle Way and North Kerry Way.

Guided Walks, Cycling and Mountain Biking

South-West Walks, 28 The Anchorage, Tralee.
T. (066) 712 8733 www.southwestwalksireland.com

Evening Entertainment

Kingdom Greyhound Stadium, Brewery Road, Tralee.
Evening racing Tuesday (seasonal), Friday and Saturday. T. (066) 718 0008
Tralee Omniplex, 8 Screen Cinema, Dan Spring Road. T. (0818) 719 719
Siamsa Tire Theatre, Town Park, Tralee. T. (066) 712 3055

Pub Entertainment and Restaurants

Too many to list individually.
Details available from Tralee Tourist Information Office. T. (066) 712 1288.
Fabric Night Club, Godfrey Place. Tralee. Over 18s only. (066) 712 4174.
Horans Night Club, Boherbee, Tralee. Over 18s only. (066) 712 3123

Sightseeing Tours

Tralee is the ideal base to explore County Kerry. Whether it's the spectacular scenery of the Dingle Peninsula, North Kerry Coastal drive, Lakes of Killarney, Gleannteenassig Forest Park (N86/R560), Killarney National Park, Caragh Lake and the Ring of Kerry - all are less than an hour's drive of Tralee. See routes and details at www.holidaytralee.com and click on "sightseeing".